



a living space for all





Canoë: Where a vibrant community meets modern conveniences, offering a harmonious blend of urban comfort and sustainable innovation in the heart of Hochelaga-Maisonneuve.

the neighborhood

+ A living space for all



Discover Hochelaga-Maisonneuve

Located in the heart of Montreal, the Hochelaga-Maisonneuve neighborhood is a true urban gem. With its lively streets and welcoming atmosphere, this area combines authenticity with energy. Residents enjoy a vibrant environment filled with local shops and recreational spaces.

Amenities

The neighborhood is brimming with local businesses, providing convenient access to everything you need daily while supporting local enterprises.

Independent Cafés

Take a moment to enjoy a coffee or pastry at one of the many independent cafés in the neighborhood. A delightful break in the heart of urban life.

Craft Breweries

For local beer enthusiasts, Hochelaga-Maisonneuve is renowned for its craft breweries, where you can enjoy high-quality local brews in a relaxed and festive atmosphere.

Marché Maisonneuve

The Marché Maisonneuve offers fresh, local products, perfect for those who value quality and variety. A true weekly destination for lovers of fine goods.

Green Spaces

The numerous parks and green spaces around Canoë are perfect for reconnecting with nature, engaging in outdoor activities, or simply relaxing with family.

Attractions



Olympic Stadium
Botanical Garden

Biodôme

Insectarium

Saputo Stadium

Olympic Pool



our condominiums

+ Canoë: comfort, community, and friendliness.



An inspiring lifestyle

Canoë offers a diverse range of over 900 condos and apartments, spread across several phases, with buildings ranging from 4 to 10 stories. Designed to encourage interaction and connection, the project features common spaces aimed at creating a real bond between residents.

The pedestrian walkway, the main artery of the project, will become a meeting point where public art, social spaces, and play areas come together to offer a unique living experience.





A simplified and connected life

Canoë integrates a grocery store and local shops within the project, making daily life easier. For families, a daycare (CPE) will be added in Phase 2, just steps away from your home. Finally, with Viau and Pie-IX metro stations within walking distance, you're quickly connected to the entire city while enjoying a peaceful lifestyle.



Viau



Pie-IX





A condominium that reflects your style

Our condos go beyond mere housing; they embody a unique lifestyle. The elegance of the materials and the refinement of the finishes blend with the vibrant energy of the neighborhood. Designed for comfort and style, with units ranging from 1 to 3 bedrooms and two-story options, each residence is fully customizable to meet your needs and aspirations.

Every element of your condo has been chosen to combine elegance and functionality. You will enjoy engineered wood flooring, quartz countertops, and ceramic backsplashes in a kitchen that is both stylish and practical. The bathrooms, with modern vanities and ceramic flooring, provide optimal comfort.



Kitchens inspired by nature

The five kitchen designs in the Canoë project are created to reflect the beauty of nature. Each combines durable materials and elegant finishes, creating a warm and inviting atmosphere. Inspired by natural elements, these choices provide each residence with a functional and aesthetically pleasing space, suited to different lifestyles.



Color 1 / Minimalist and sleek, this kitchen and bathroom emphasize simplicity and tranquility while remaining elegant and sophisticated.



Color 2 / A space where natural materials and concrete meet. The wooden accents bring warmth and authenticity, while the concrete adds a modern and sturdy touch.

A well-thought-out and thoughtfully designed home



Color 3 / A design that is pure, practical, and inspiring, creating an environment conducive to relaxation.



Color 4 / A kitchen with smooth, clean lines that evokes the calm of a serene river. Perfect for those seeking a peaceful and harmonious atmosphere.



Colo 5 / A bold and dynamic design, featuring contrasting materials and colors that bring energy and character to your space.

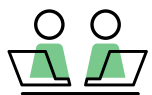
common areas



+ Shared moments, strengthened community.

To relax and connect

Canoë offers exceptional common spaces designed to enrich your daily life.



Urban chalet and **coworking**

Located on the rooftop, this versatile space is perfect for work, hosting private events, or spontaneous moments with friends, all while offering breathtaking views of the city.

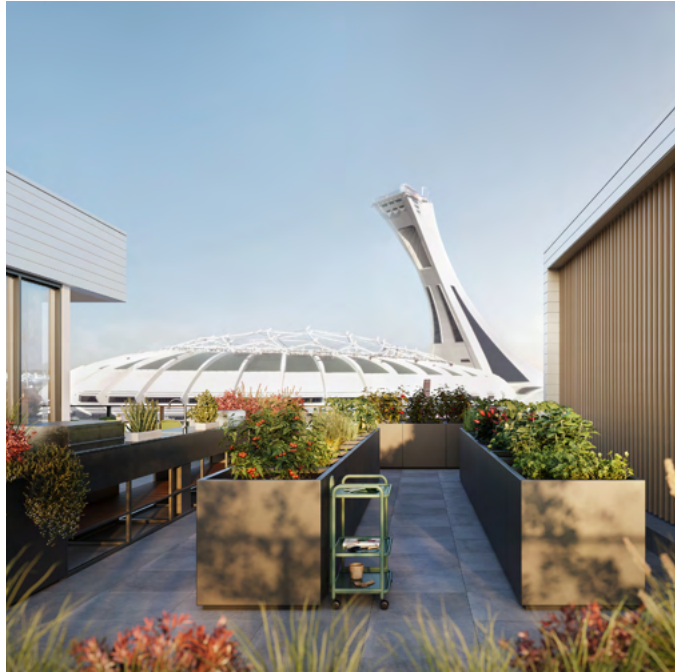


Gym & Yoga

Nearly 3,000 sq. ft. dedicated to your well-being, featuring state-of-the-art equipment and spaces for yoga and strength training.

Shared Terrace

Perfect for an evening with friends or to enjoy the view of Mount Royal, the Olympic Stadium, the Jacques-Cartier Bridge, or the fleuve, all in a setting equipped with BBQs, a fireplace, and urban gardens.



Lobby

Inspiring and welcoming, it perfectly reflects the lifestyle offered in this unique real estate project in Hochelaga-Maisonneuve.

eco-friendly and sustainable

+ A responsible vision for a sustainable future.



Energy efficiency

- **43 %** energy savings compared to current code
- **77 %** reduction in GHG emissions compared to the 2017 NECB



Implemented measures

- Enhanced building envelope
- VRF with heat exchange
- Efficient heat recovery exchangers
- Low water flow devices
- Fresh air in corridors through air-to-air heat exchange



Waste management

- Refrigerated room, eliminating odors and bacteria
- Cardboard folder to reduce space and increase recycling capacity
- Waste compactor to optimize waste transportation
- On-site composting (compost room within the waste room)



Green roofs

- Vegetated rooftops
- White roofs to counteract heat islands



Urban agriculture

- Beekeeping and fruit trees
- Rooftop gardens
- Planting of over 100 new trees



Green mobility

- Car sharing
- Bike sharing
- 10 % of the site designated for a park as per the City of Montreal
- Electrification of all parking spaces







Your new living environment